

ELECTRO-OPTICAL PRODUCTS PROPRIETARY

THIS DOCUMENT CONTAINS PROPRIETARY INFORMATION AND EXCEPT WITH WRITTEN PERMISSION OF ELECTRO-OPTICAL PRODUCTS CORPORATION SUCH INFORMATION SHALL NOT BE PUBLISHED, OR DISCLOSED TO OTHERS, OR USED FOR ANY PURPOSE, AND THE DOCUMENT SHALL NOT BE DUPLICATED IN WHOLE OR IN PART.

REVISIONS

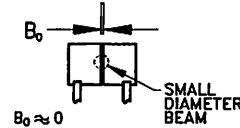
REV	DESCRIPTION	DATE	APPROVED

	50% DUTY CYCLE		90% DUTY CYCLE	
FREQUENCY	FULL APERTURE		FULL APERTURE	
Hz	mm	Inches	mm	Inches
10-150	5.1	.20	10.2	.40
200	4.0	.16	8.1	.32
250	3.8	.15	7.6	.30
300	3.1	.12	6.1	.24
400	2.4	.10	4.8	.19
450	2.0	.08	4.0	.16
500	1.8	.07	3.6	.14
600	1.5	.06	3.0	.12
700	1.2	.05	2.0	.09
800	1.0	.04	2.0	.08
900	0.8	.03	1.6	.07
1000	0.6	.03	1.2	.05

THE ABOVE SHOULD SERVE AS GUIDELINES ONLY

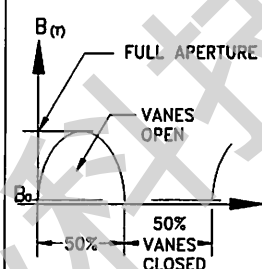
50% DUTY CYCLE

1. VANES POSITION AT REST:



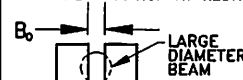
$B_0 \approx 0$
 B_0 IS THE OPENING AT REST

2. VANE POSITION $B(t)$ AS A FUNCTION OF TIME:



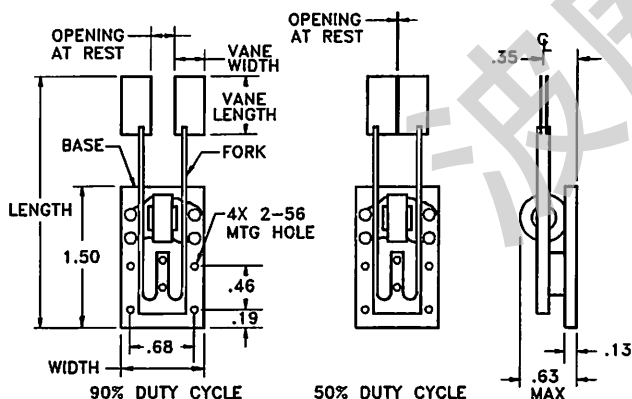
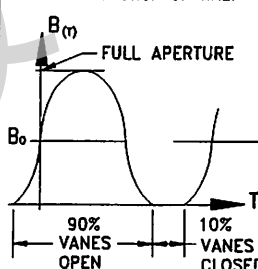
90% DUTY CYCLE

1. VANES POSITION AT REST:



$B_0 \approx 1/2$ FULL APERTURE
 B_0 IS THE OPENING AT REST

2. VANE POSITION $B(t)$ AS A FUNCTION OF TIME:



DIMENSIONS ARE IN INCHES
METRIC MOUNTING OPTIONAL

- NOTES: 1) FOR 50% DUTY CYCLE: THE OPENING AT REST IS ZERO
2) THE STANDARD BASE HOLDS A SINGLE COIL.
A BASE WITH TWO COILS IS RECOMMENDED FOR LOW FREQUENCIES AND HIGH AMPLITUDE STABILITY (WITH THE AGC DRIVER) AND FOR A WIDE TEMPERATURE RANGE
A BASE WITH THREE COILS IS RECOMMENDED FOR HIGH FREQUENCIES AND HIGH AMPLITUDE STABILITY (WITH THE AGC DRIVER) AND FOR A WIDE TEMPERATURE RANGE
3) THE VANE MOTION IS SINUSOIDAL

FREQUENCY Hz	LENGTH INCH	CHOPPER WIDTH INCH		VANE LENGTH INCH		OPENING AT REST
		SINGLE COIL	DOUBLE/TRIPLE COIL	INCH	INCH	
10-50	2.81	.88	1.00	.63	.37	.20
60-200	2.69	.88	1.00	.63	.31	.20
200-400	2.56	.88	1.00	.50	.31	.20-.10
400-600	2.40-2.00	.88	1.00	.40	.24	.10-.06
600-800	2.00	.88	1.00	.40	.24	.06-.04
800-1000	2.00	.88	1.00	.40	.23	.04-.03

UNLESS OTHERWISE SPECIFIED
DIMENSIONS ARE IN INCHES
& PER ANSI Y14.5M-1982

FRACTIONS \pm
ANGLES $\pm 1/2^\circ$
3 PLACE DECIMALS ± 005
2 PLACE DECIMALS ± 01
HOLES \pm

ELECTRO-OPTICAL PRODUCTS CORP.
FRESH MEADOWS, NEW YORK

TITLE CH-10 TUNING FORK CHOPPER
GUIDE LINES

PREPARED 5/24/01

SIZE A DWG NO. 01-100627 REV. -

APPROVED

SCALE NTS SHEET 1 OF 1